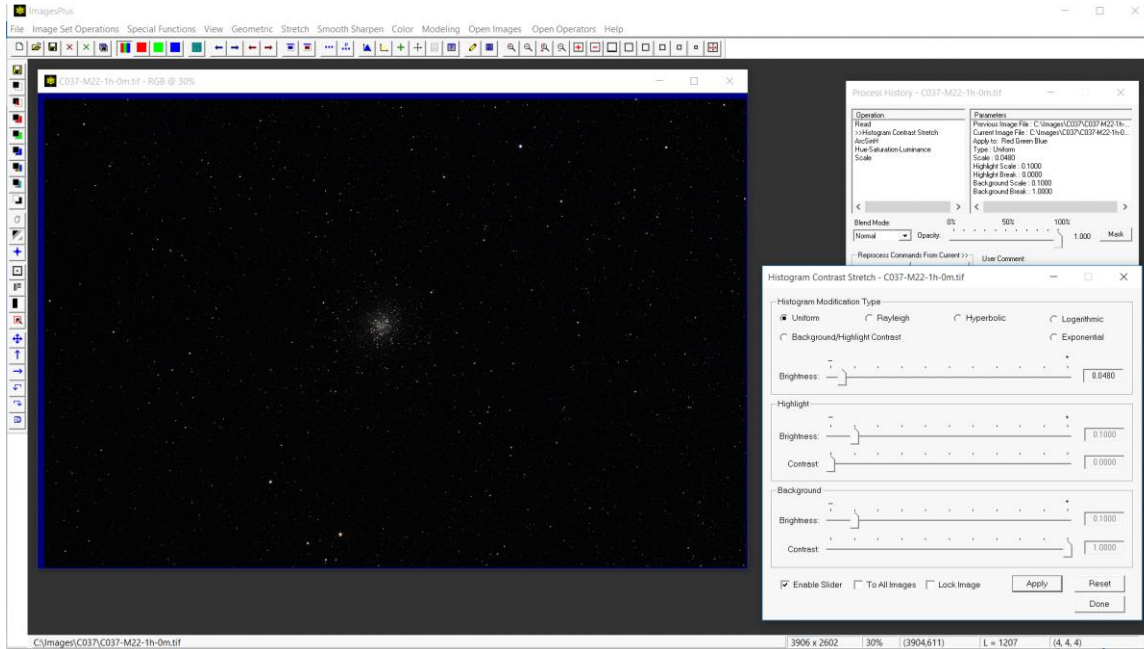
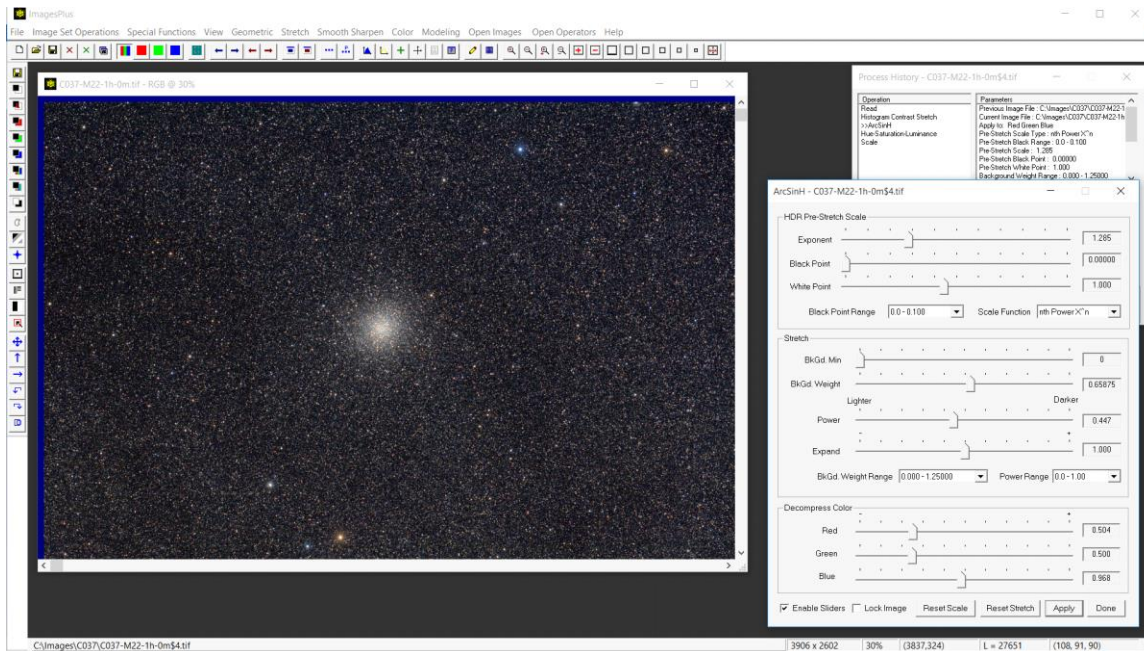


C037-M22-1h-0m from the [DSLR ASTRO IAMGE PROCESS Yahoo Group](#). Data provided by Neil Heacock.

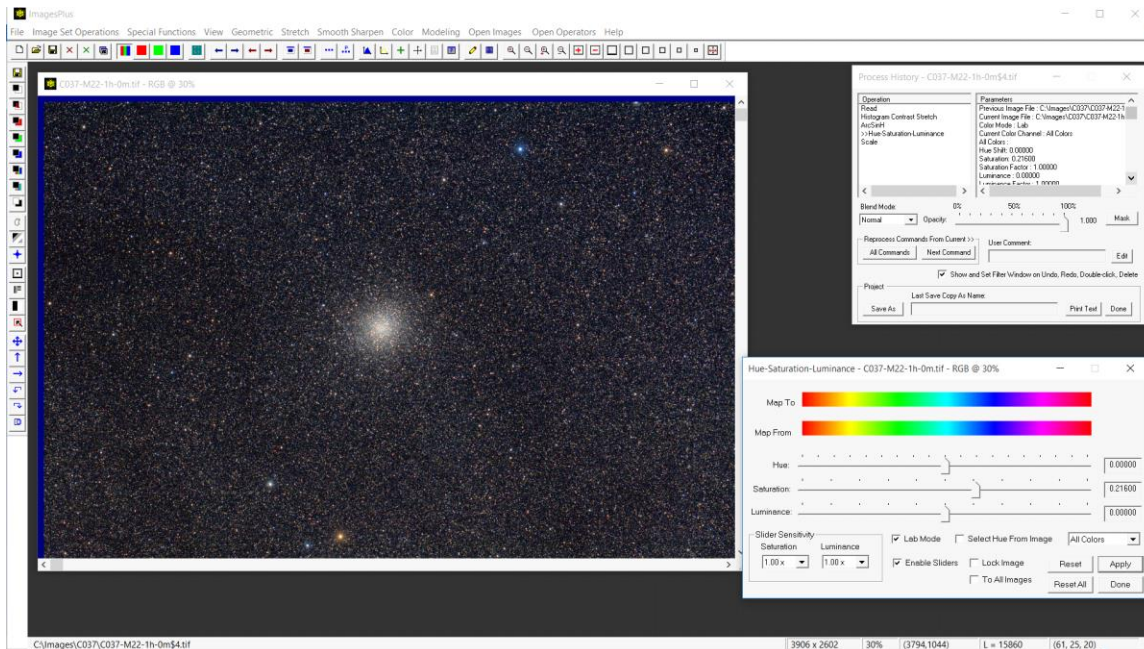
ImagesPlus 6.5 workflow for processing C037-M22-1h-mlunsold-IP65.jpg



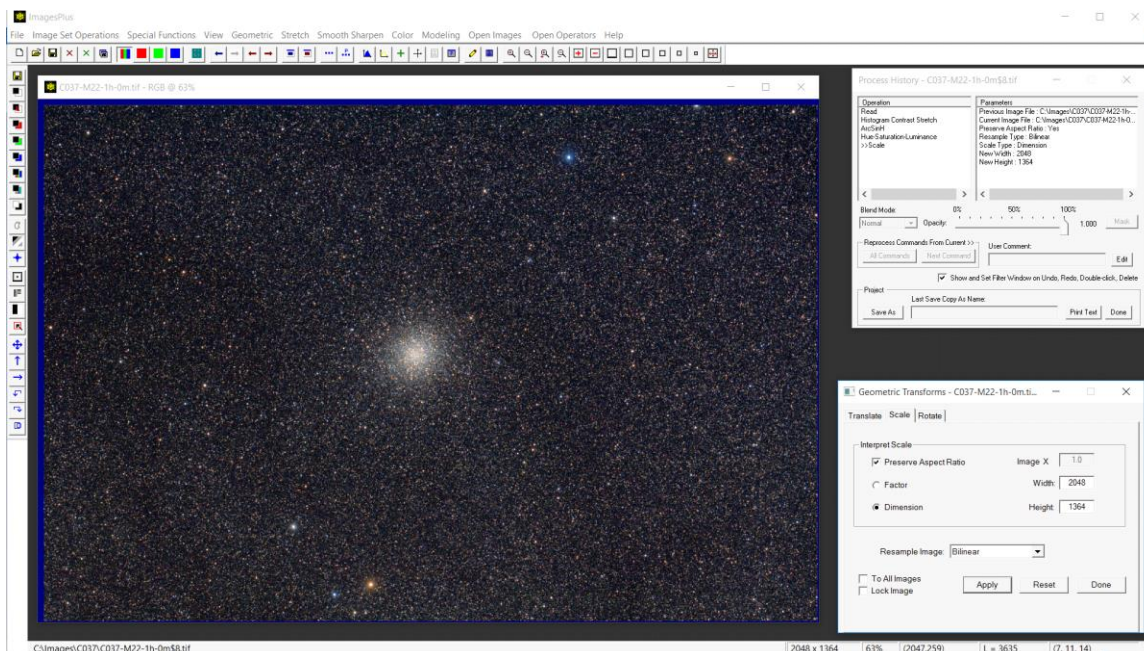
**Step 1.** A very mild uniform histogram contrast stretch is used to balance the color channels since the green and blue channels are very compressed compared to the red channel.



**Step 2.** Arcsinh is used to stretch the image. A pre-stretch scale is used along with increased blue decompression.



**Step 3.** Mild saturation increase in Lab mode.



**Step 4.** The Geometric Transform Scale tool is used to change the size of the image to the standard 2048 x 1364 display size.



Final C037 M22 1h 0m image from data provided by Neil Heacock.